

Registered Office:

2nd Floor, West Wing, Worldmark 1,
Aerocity IGI Airport Hospitality District, New Delhi - 110037. Tel: 91 11-4279-1399
Email: info@greenlam.com | Web: www.greenlam.com

[f](#) /greenlaminat [t](#) /greenlam01 [@](#) /greenlam_laminates/ [v](#) /greenlamIndustries



STRATUS
TABLETOP SOLUTIONS



5589 • Travertino Biscoti • Suede



Greenlam
LAMINATES

Greenlam's journey was sparked by a simple yet inspiring thought—every space is worthy of its own unique character. For over two decades, Greenlam has been synonymous with exceptional artistry, unsurpassed quality, and unyielding passion for excellence. Since, its decor and surface solutions spread across numerous laminates, compacts, decorative veneers, engineered wooden floors and doors, it is only fitting to find Greenlam amongst the top surfacing solution brands in the world.

Winning acclaims and accolades in over 100 countries with millions of delighted customers, Greenlam brings newness and innovation to the table that's equally enjoyed by both architects and consumers alike. Owing to its long-standing commitment towards people and the environment, Greenlam strives to deliver only the best right from sourcing to manufacturing to recycling with stringent measures in place.



5587 • Smoky Fern • Suede



Greenlam

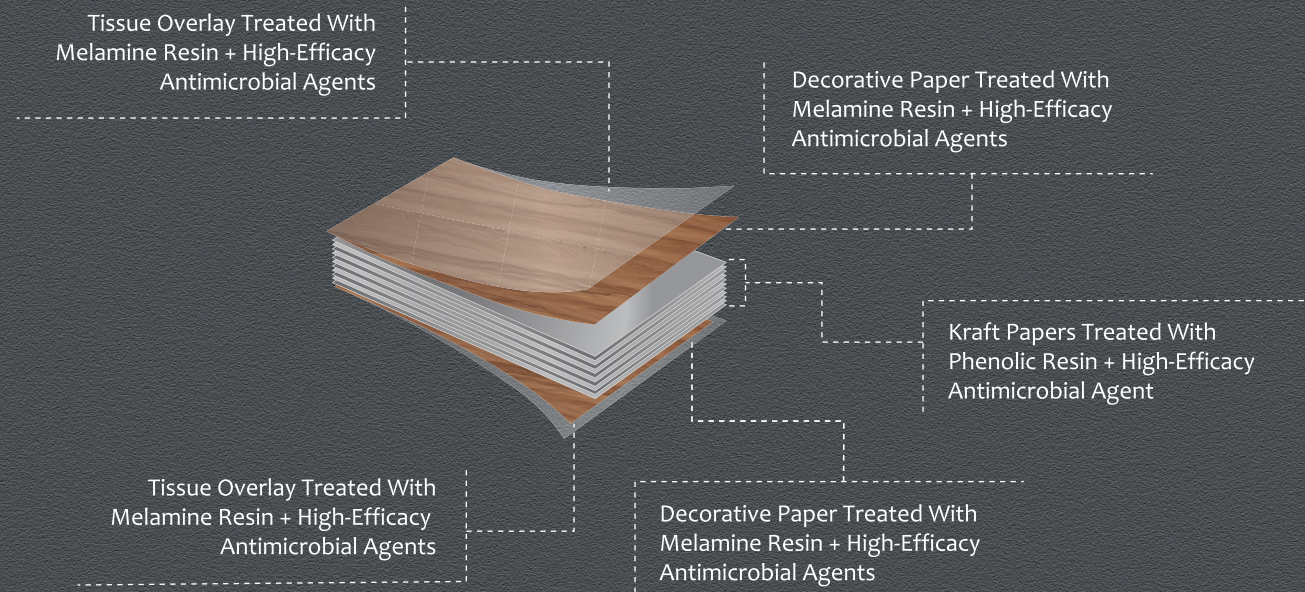
STRATUS
TABLETOP SOLUTIONS

ANSWERING
THE NEW AGE
NEED TO HAVE
EFFICIENT,
MODERN AND
VERSATILE
TABLETOPS.

Introducing Stratus tabletop laminates - an innovative solution engineered to meet the increasing demand for smart and efficient tabletop surfaces. These unique self-supporting laminates offer both convenience and durability, making them an ideal choice for workable tabletops.

Crafted with fine materials, they are heat and abrasion-resistant, providing long-lasting performance. What's more, their anti-bacterial and anti-virus properties ensure a safe and hygienic surface for all your needs.

CONSTRUCTION TECHNIQUE



SIZES AND SHAPES

ROUND



Φ500/ Φ 600/ Φ 800/ Φ 1000
Customized sizes available

SQUARE



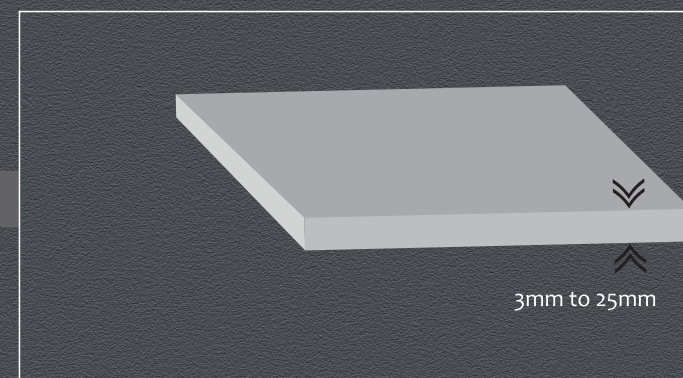
600x600 750x750 800x800
Customized sizes available

RECTANGLE



600x1200 750x1500 800x1800
1200x1800 Customized sizes available

THICKNESS





116 • Pearly White • Suede

FEATURES



ABRASION
RESISTANT



TEMPERATURE
NEUTRAL



EASY TO
FABRICATE



HIGH WEAR
RESISTANCE



MOISTURE
RESISTANT



AIR QUALITY
GREENGUARD
CERTIFIED



SUSTAINABLE



ANTI-VIRUS
ANTI-BACTERIAL



HEAT RESISTANT



EASY TO
MAINTAIN



BEAUTIFUL
TEXTURES



IMPACT
RESISTANT



SAFE
CONTACT
WITH FOOD



MACHINABLE
THROUGH
ITS THICKNESS



SELF
SUPPORTING
(12MM)

USAGE AND
APPLICATION

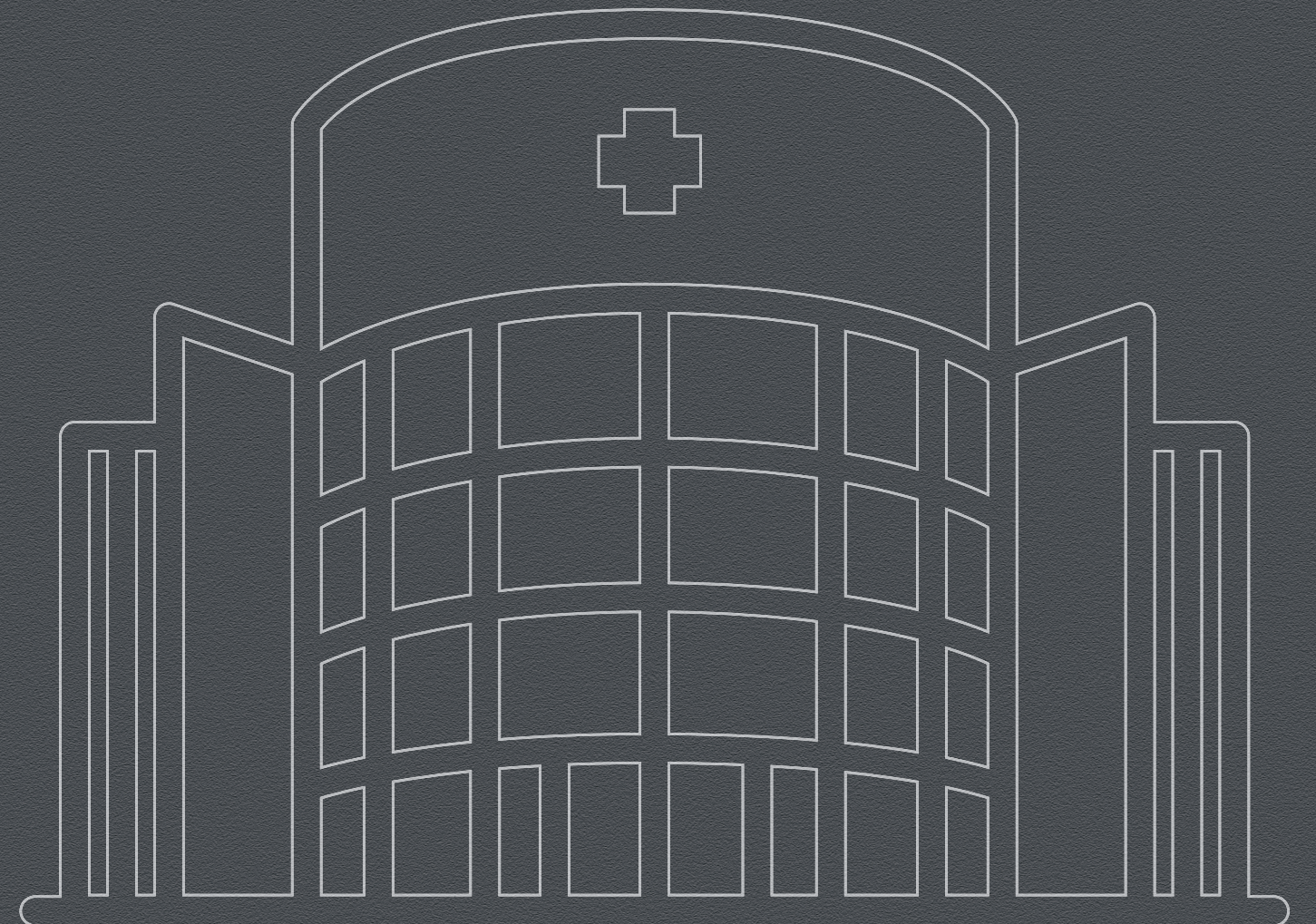


5006 • Thansau Maple • Suede



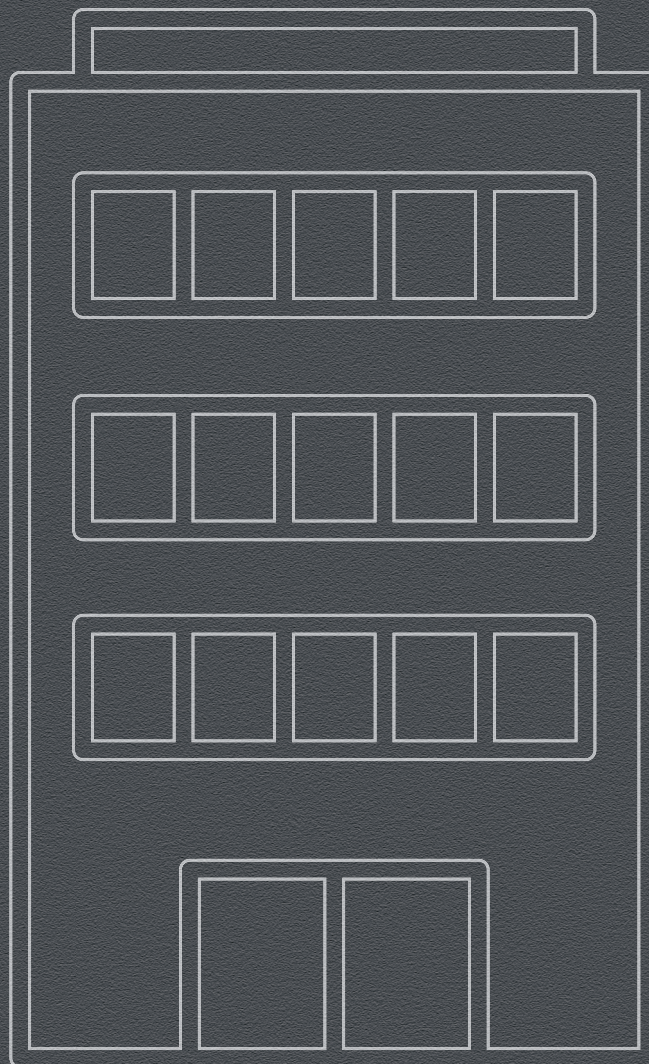
HEALTHCARE

In hospitals, health is a key priority and with these table tops offering bacteria free and virus free surfaces, there is surely an assurance of right care that comes when we see these surface tops on tables, stools, OPDs, in waiting lobbies as well as storage compartments and dedicated medical areas.



CORPORATE

In corporate world, durability is instrumental in the long term life usage as it faces lot of rough use, pressures, overuse and often mishandling. That means, the surfaces need to have key attributes like scratch resistant, waterproof, durable and tough. Apart from that, it must ofcourse also be, stylish and attractive. With all these variable needs being created here, these table tops are undoubtedly the smartest performers in every company.



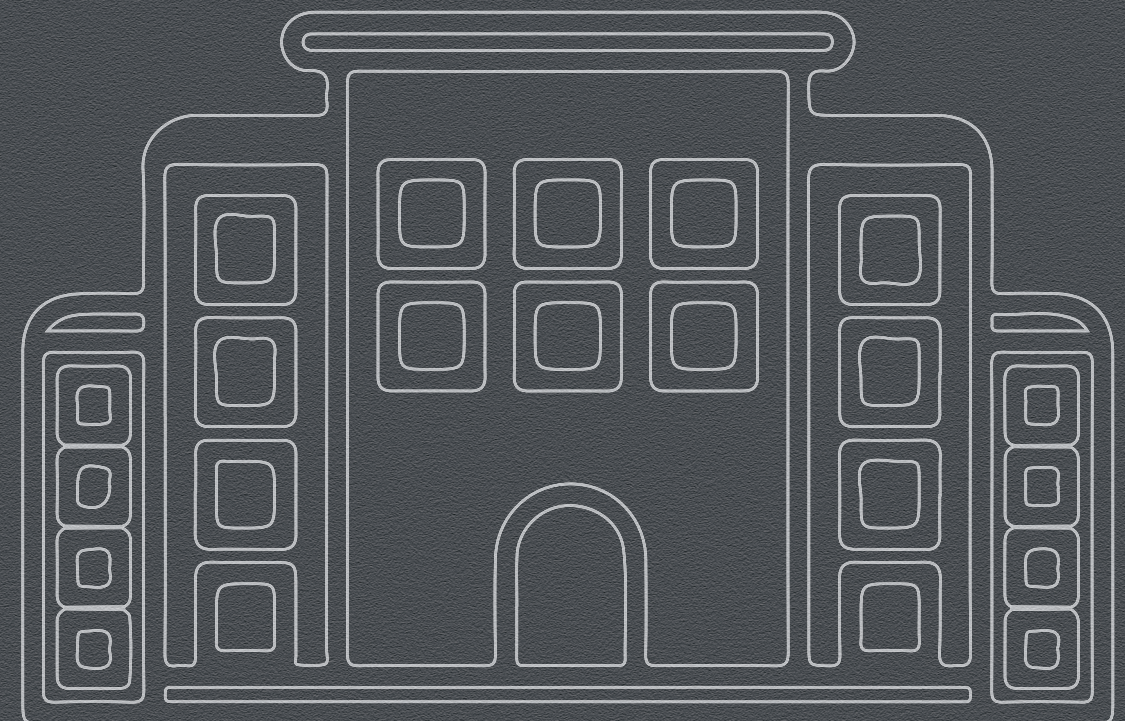
5385 • Plaster Wood • Suede



5076 • Primeval Oak • Suede

HOSPITALITY

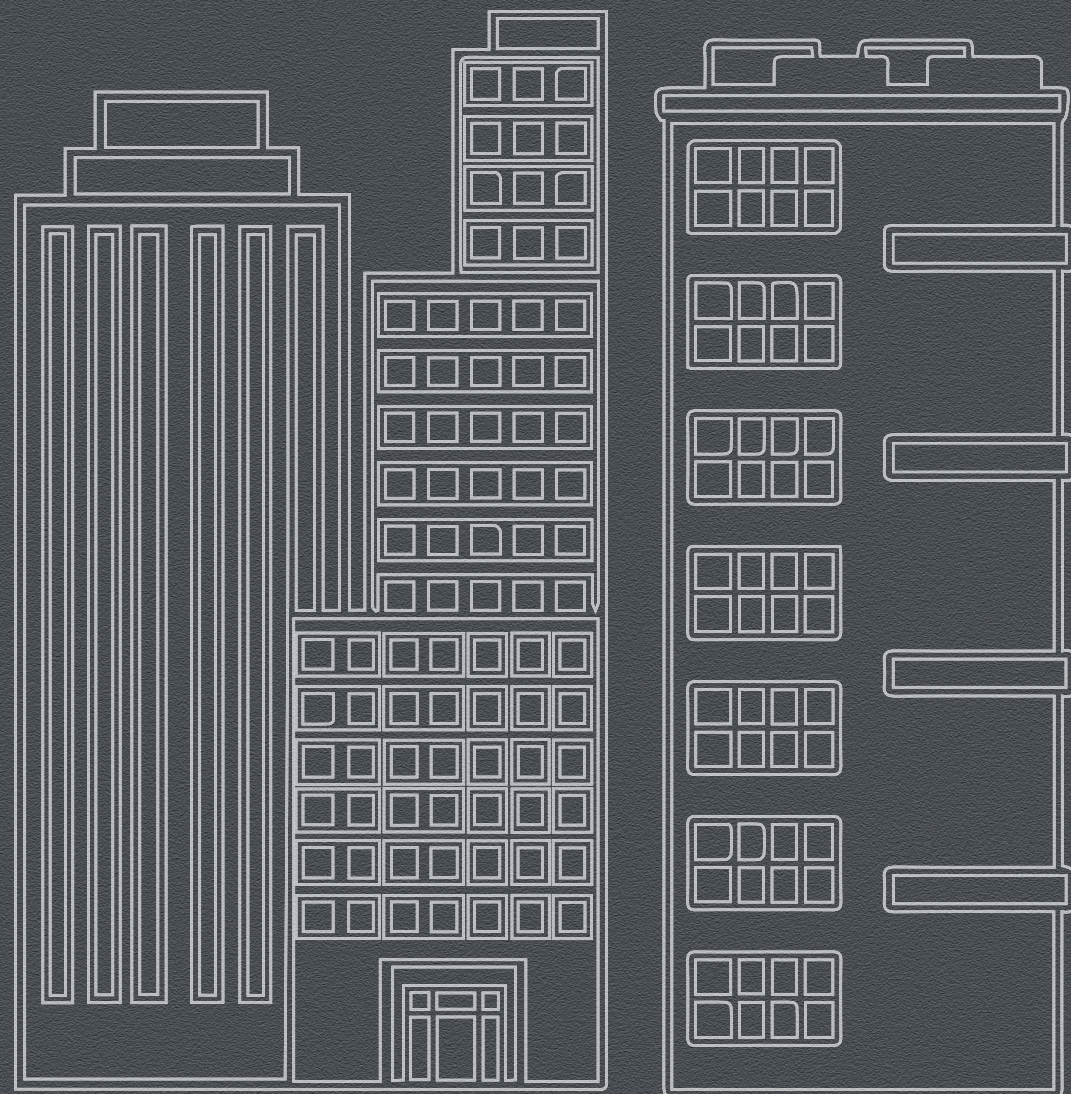
In the hospitality sector, care and safety is of utmost priority and that is why, these tabletops are just the perfect choice as they offer hygienic anti-bacterial and anti-virus surfaces. From reception areas to waiting halls to conference rooms, Stratus tabletops are sustainable and ensures safe contact with food.



RESIDENTIAL

Be it a stylish centre table, or an elegant dining table or even a ultra mod showcase, everything is thoughtfully designed to be kids friendly, both in safety and appeal.

The sheer range and quality adds lot of class to the place, making a residential place truly lovable.

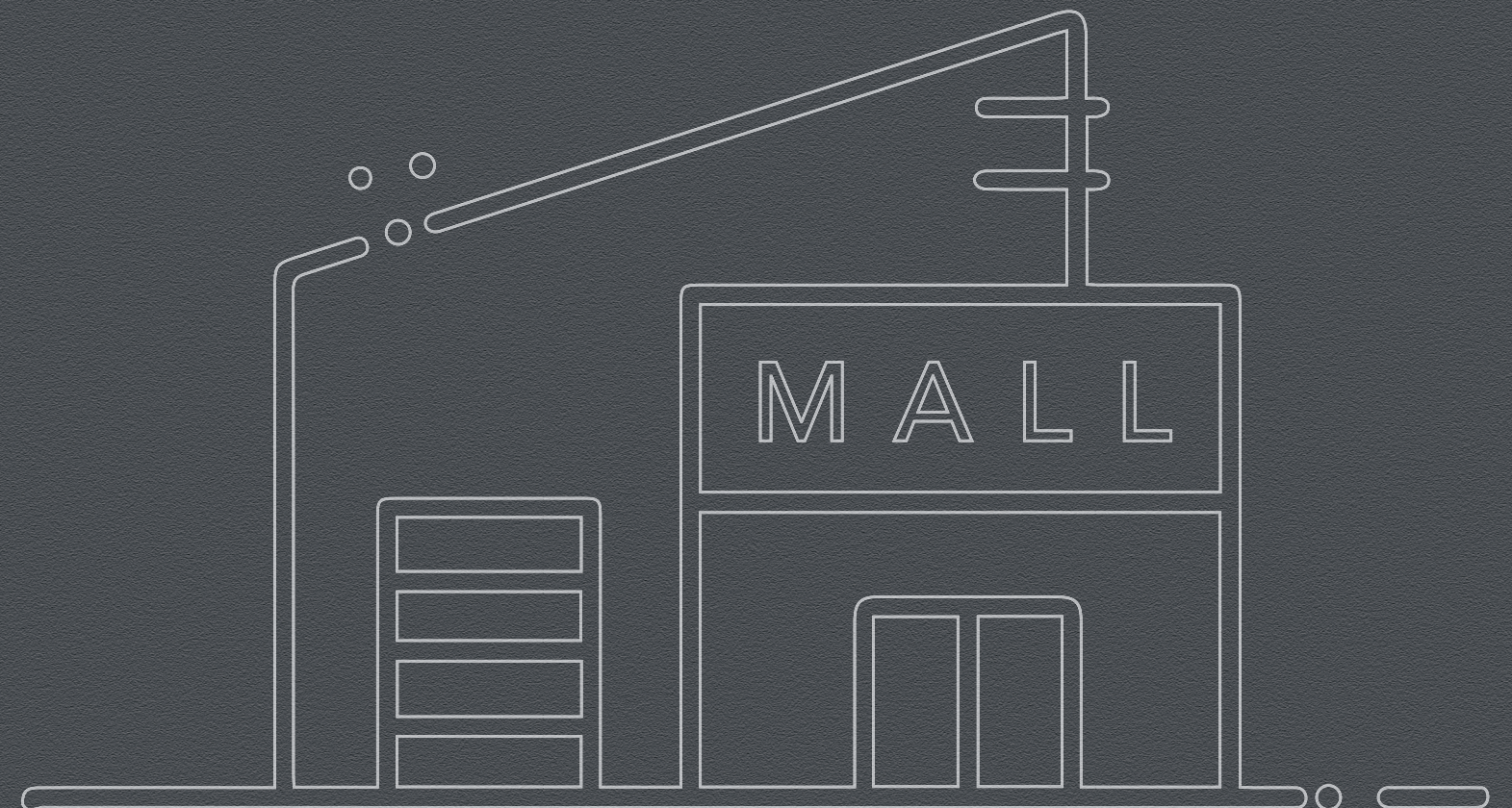




5076 • Primeval Oak • Suede

RETAIL

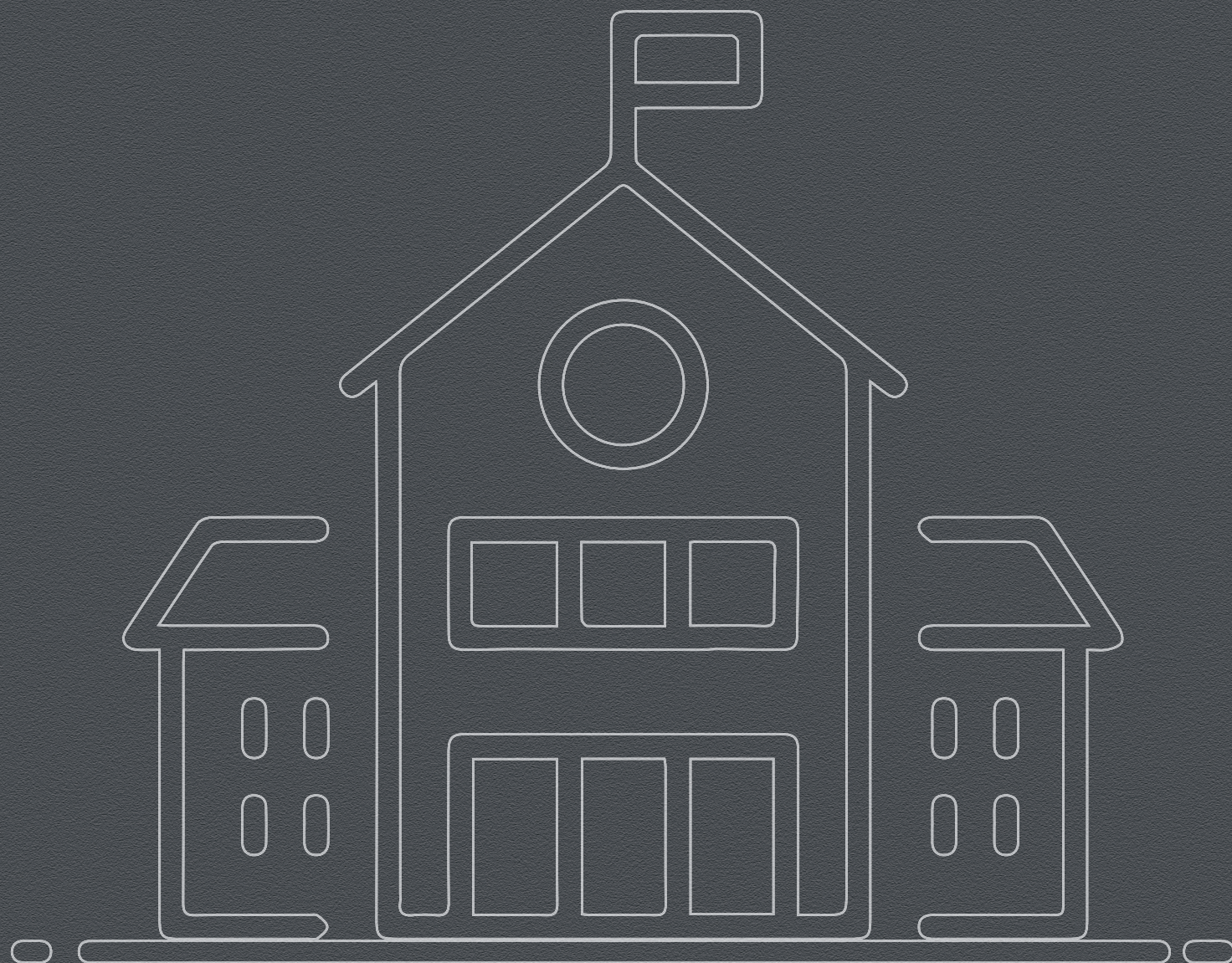
In retail sector, where presentation appeal is very important, these table tops play a very critical role as they offer a wide range of designs, styles and shades to match your retail store along with high durability.



EDUCATION

In education sector, while durability and styles are important, what is critical is the safety and hygiene as kids are more vulnerable to infections.

3 offering bacteria free surfaces for school benches, tables, staff rooms, activity area to labs, so that kids have a healthy learning environment, quite literally.





5577 • Houston • Suede

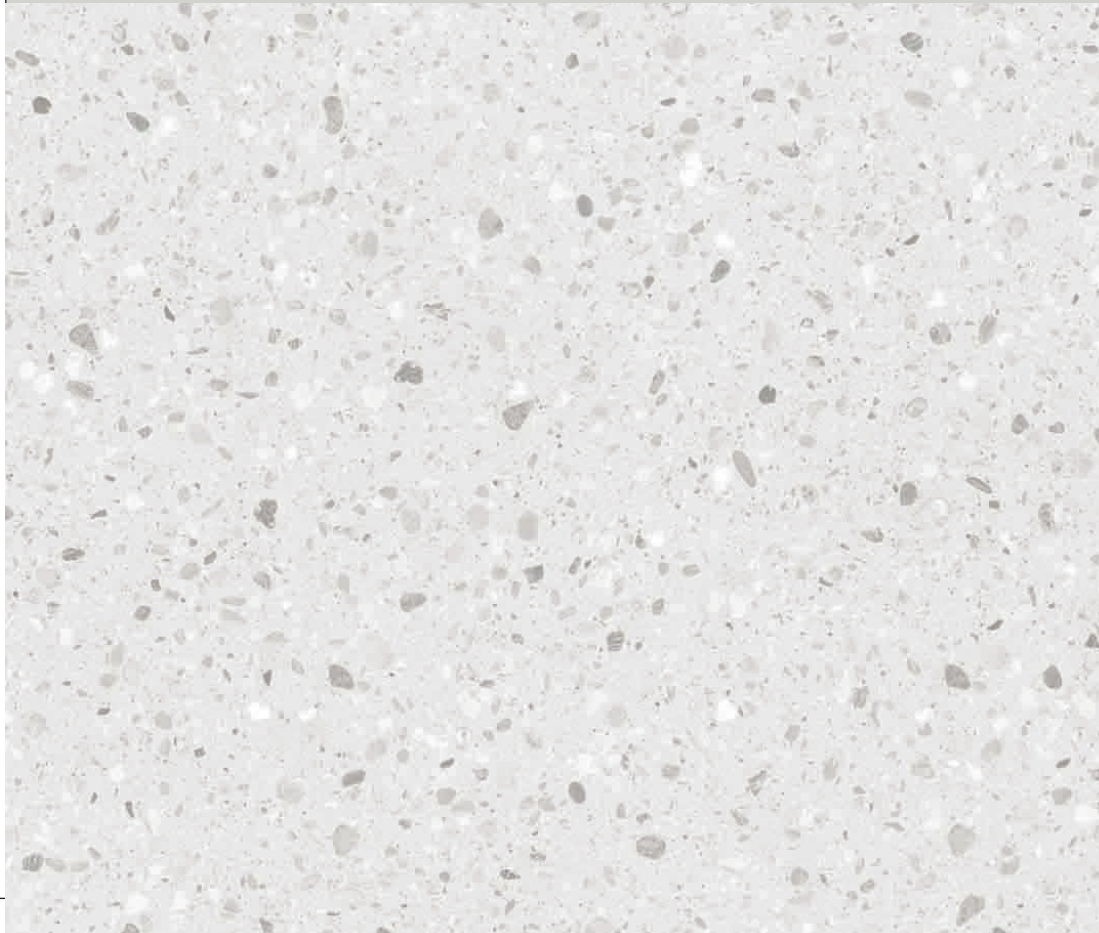


5587 • Smoky Fern • Suede



5588 • Gris Feria • Suede

ABSTRACT



5581 • Torino Pearl • Suede



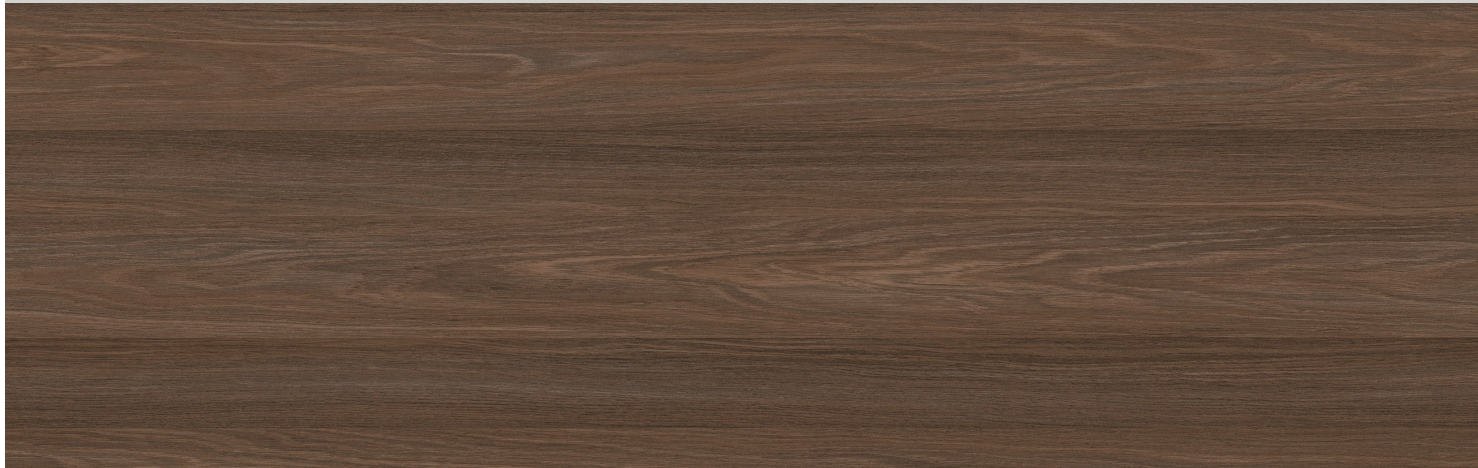
5589 • Travertino Biscoti • Suede



5853 • Alu Taint • Suede



5333 • Nordic Walnut • Suede



5389 • Salvador Oak • Suede



682 • Hiland Pine • Suede



5385 • Plaster Wood • Suede



5386 • Rovere Bardolino • Suede

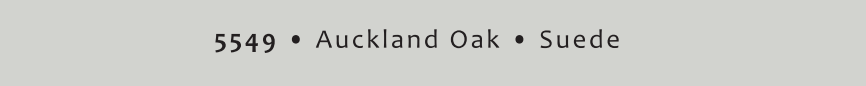


5006 • Thansau Maple • Suede

WOODS

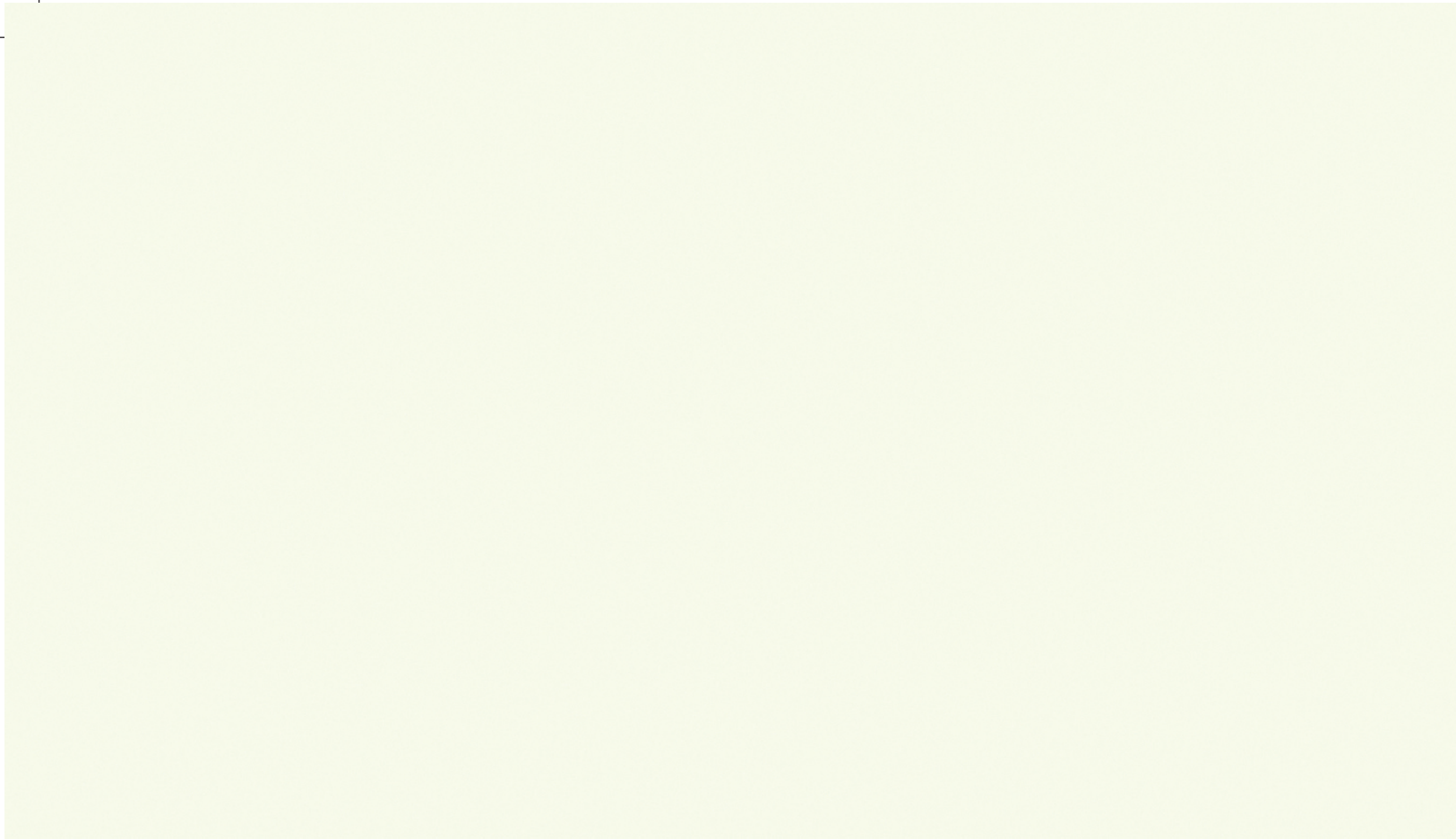


5076 • Primeval Oak • Suede

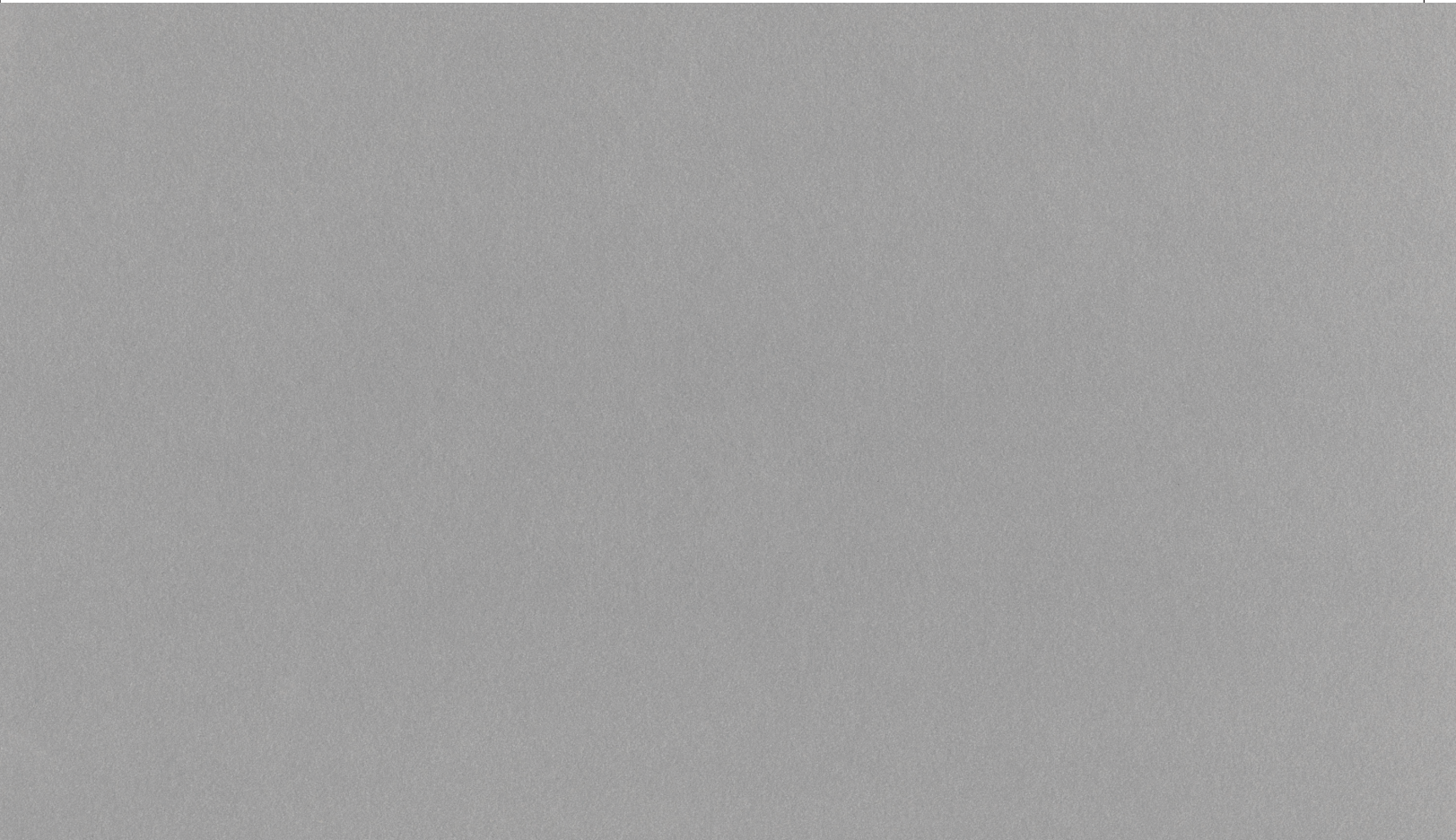


5549 • Auckland Oak • Suede



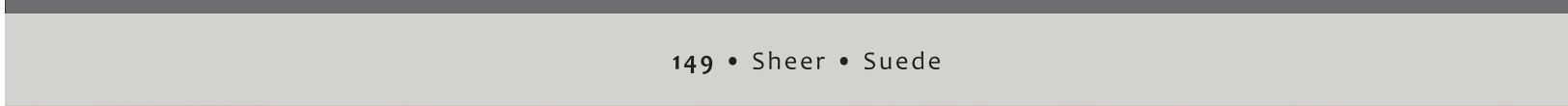


116 • Pearly White • Suede

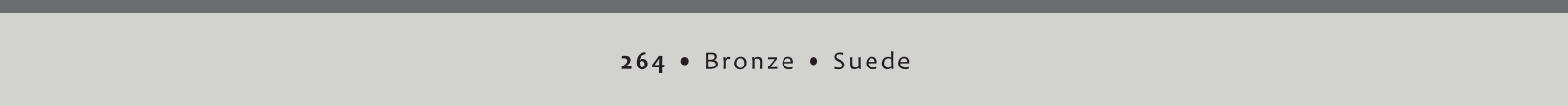


268 • Dust • Suede

COLORS



149 • Sheer • Suede



264 • Bronze • Suede



Technical Specifications

S. No.	Properties	Unit	Test method as per EN 438 Part 2 & 4: 2016	Specified Values	Typical Results Greenlam
1	Classification		EN 438-4-4		
PHYSICAL & DIMENSIONAL PROPERTIES					
2	Nominal Thickness	mm		12.0	
3	Thickness	mm	EN 438-2-5	12.0 ± 0.50	Complies
4	Length & Width	mm	EN 438-2-6	+10mm/ -Nil	Complies
5	Density	g/cm ³	EN ISO 1183 -1:2004	1.35	1.4
6	Dimensional Stability at Elevated Temperature				
	Longitudinal Direction	%	EN 438-2-17	0.30 (max)	0.08
	Transverse Direction	%		0.60 (max)	0.15
MECHANICAL PROPERTIES					
7	Resistance to Immersion in Boiling Water (2 hours)				
	Mass Increase	%		2.0 (max)	0.24
	Thickness Increase		EN 438-2-12	2.0 (max)	0.68
	Appearance	Rating		Not worse than 4	5
8	Resistance to Impact by Large Diameter Ball				
	Drop Height	mm	EN 438-2-21	1800	1900
	Diameter of Indentation	mm		10 (max)	7
9	Flexural Modulus	Mpa	EN ISO 178: 2003	9000 (min)	Complies
10	Flexural Strength	Mpa		80 (min)	Complies
11	Resistance to Crazeing	Rating	EN 438-2-24	Not worse than 4	5
SURFACE PROPERTIES					
12	Resistance to Water Vapor	Rating	EN 438-2-14	Not worse than 4	5
13	Resistance to Dry Heat at 160°C	Rating	EN 438-2-16	Not worse than 4	5
14	Resistance to Wet Heat @100°C	Rating	EN 438-2-18	Not worse than 4	5
15	Resistance to Surface Wear, IP	Rev.	EN 438-2-10	150 (min)	Complies
16	Resistance to Scratching	N	EN 438-2-25	2.0 (min)	2.5
17	Resistance to Staining				
	Group 1 & 2	Rating	EN 438-2-26	5	5
	Group 3			4	≥ 4
18	Light Fastness (Xenon Arc Lamp) - Grey Scale Contrast	Rating	EN 438-2-27	4 to 5	Complies
FIRE PERFORMANCE					
19	Reaction to Fire	Euroclass	EN 13501-1	C-s2, d0	Complies
20	Calorific Value	MJ/kg	ISO 1716: 2010	19.91 (max)	19.88
HEALTH & ENVIRONMENTAL CHARACTERISTICS					
21	Food Safe	-	EN 13130-1	-	YES
22	Contents' Migration as per Food Commission Regulation	Migration	EN 1186-1, 3 & 14: 2002		
23	Formaldehyde Emission (Release)	ppm	EN 16516-2017	0.1	0.02
24	Volatile Organic Compounds (VOC) Emission	Class	ISO 16000-9	-	A
25	Anti-Bacterial Efficacy & Activity				
	% Reduction in 24 hours	%	JIS 2801-2012	95.0 (min)	99.99
	Activity after 24 hours	Log Reduction		2.0 (min)	Exceeds

Bacteria tested: 1. Pseudomonas, 2. Enterococcus Faecalis, 3. Candida Albicans, 4. Pseudomonas Aeruginosa, 5. Escherichia Coli, 6. Klebsiella, 7. MRSA (Methicillin Resistant Staphylococcus Aureus), 8. Salmonella Enterica

Fungus tested: 1. Aspergillus niger, 2. Penicillium funiculosum, 3. Gliocladium virens, 4. Chaetobium globosum, 5. Aurabasidium pullulans

Note: Whereas Greenlam products are manufactured thoroughly to standards, the nature of the application procedure is beyond our control. The values given above are to the best of knowledge but without liability/warranty, expressed or implied.

CERTIFICATIONS



Safe and Healthy Living alongside Greenlam Products

GREENLAM® compact laminates are manufactured with safeguard Plus Technology. A revolutionary development in laminates with anti-bacterial and anti-virus properties. This double layer protection ensures safe & healthy products that are ideal for any kind of environment.



GREENGUARD Certification Program

GREENLAM® laminates are classified under the Low Emitting Product category when measured for potentially harmful emissions. This is an assurance that our products are ideal for use in interior environments where air quality is vitally important.



GREENGUARD Gold Certification

This certification, with a stricter criteria, means that **GREENLAM®** products are suitable for use in environments where children spend significant periods of time, including schools, daycares and healthcare facilities.



GREENLAM® products have been awarded CE certification which is given to those manufacturers who declare that the product complies with the essential requirements of the relevant European health, safety and environmental protection legislation, in practice by many Product Directives. CE Marking on a product indicates to government officials that the product may be legally placed in the market in their country.



All **GREENLAM®** Compact Laminates are certified by the prestigious American body, NSF International, making them the safest laminates for human health. Our surfaces can be used in situations where they will have direct contact with food. "Our surfaces have also been tested in accordance with EC directive 1935 with regards to food safety. Our products were proved fully compliant through testing to the demanding EU Food Commission Regulation 10/2011 with successful testing to BSEN 1186-1:2002, BSEN 1186-3:2002 & BSEN 1186-14:2002".



GREENLAM® products are tested in accordance to BS EN 438 – 2&4 and strictly conforms to all the testing standards for dimensional stability and performance levels such as boiling water, moisture, impact, scratches and stain resistance.